

Cloud-Based DeviceOn/BI Edge Intelligence Services

Chia Tu

Product Manager, Industrial IoT Group, Advantech

Aug 2021



Agenda

- What is Edge-as-a-service?
- Edge Intelligence Services
- DeviceOn/BI Cloud Services
- Application Scenario
- How to get and use edge and cloud services?
- IoTMart pre-bundling packages

Scaling Digitalization with Edge-as-a-Service

DeviceOn/BI



Domain Dashboard



Digital Twin



Trend Visualization

IoT Edge Orchestration

Device Governance

- Zero Touch Onboarding & Provisioning

Edge Monitoring

- Remote System Condition Monitoring

Software Management

- App Deployment & Management



Security

- Authentication Server
- Reverse Proxy



Connectivity

- Device Connection

OPC UA Modbus TCP SNMP MQTT

- Cloud Communication

Microsoft Azure IBM AWS Google

WISE-EdgeLink

WISE-DeviceOn



Node-RED

Grafana



Virtualization

- Container Engine

docker moby project

- EdgeX Framework

EDGE X FOUNDRY



Visualization

- Platform Portal WebUI
- Grafana Dashboard



Solution Architecture



- EI Driver/FW/OS Update
- Predictive maintenance
- Traceability and recovery



- I.App Deploy
- Domain Dev.

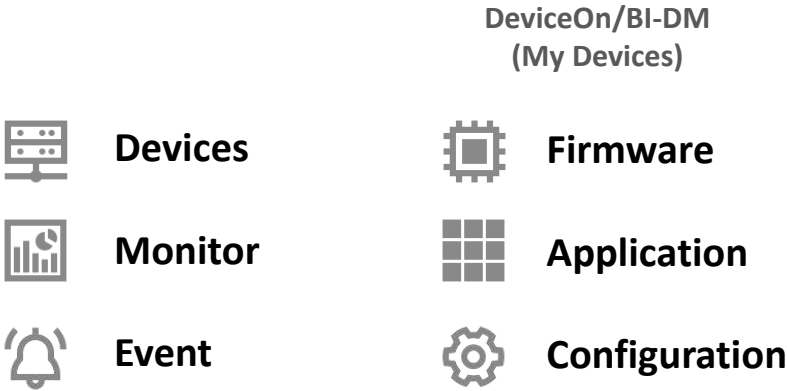


- Eco-environment Bridge
- Microservice Management



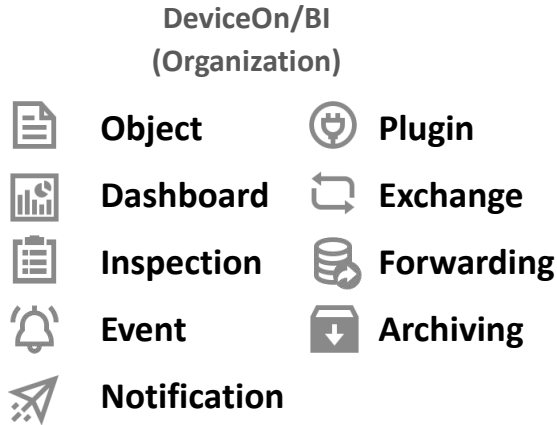
- Private Hub
- Customized Portal
- Marketplace Dev.

Cloud
Intelligence
(DeviceOn/BI)



**Shutdown
& Reboot**

Copy to BI Organization



Public Clouds



...

Private Clouds

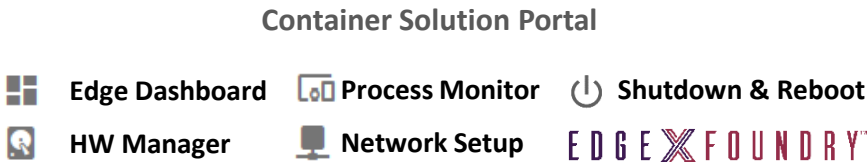
WISE-STACK



...



Edge
Intelligence
(EIS)



Docker Engine



Host OS

DeviceOn/BI Agent Service

- Windows All-in-one Toolkit
- Container-native (Comply to standard Linux)
- Post-Installation



(Shell Script format)

Third-Party Cloud Agent Service

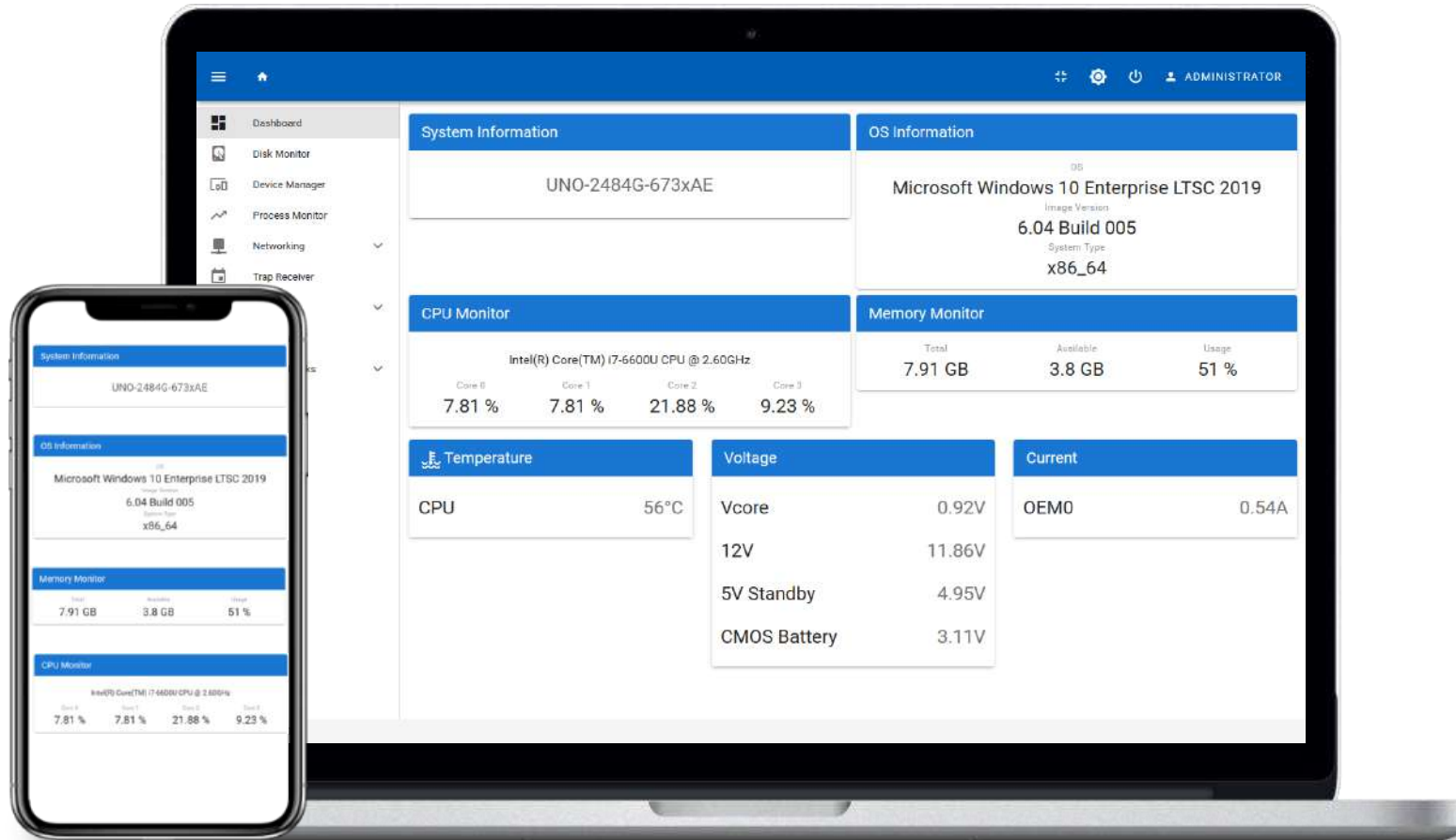
- AWS IoT Greengrass



(AWS IoT Greengrass)



From Edge Visualization to Digital Twin



Hardware Monitoring

- Status Monitoring and Diagnostics
- Event Alarm and notification



Software Management

- Running Process Monitoring And Shutdown
- Installed Software Update And Remove



Communication Configuration

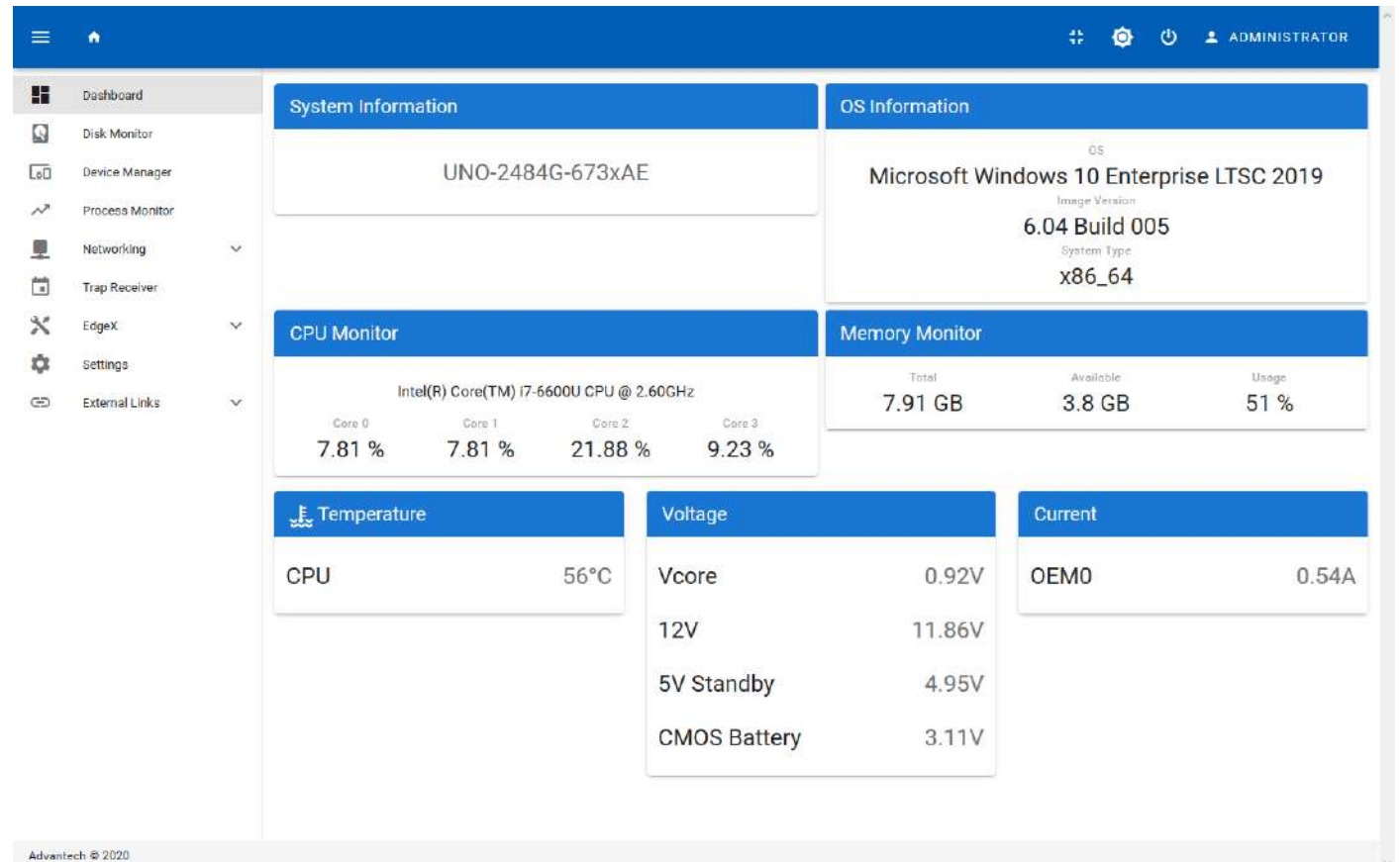
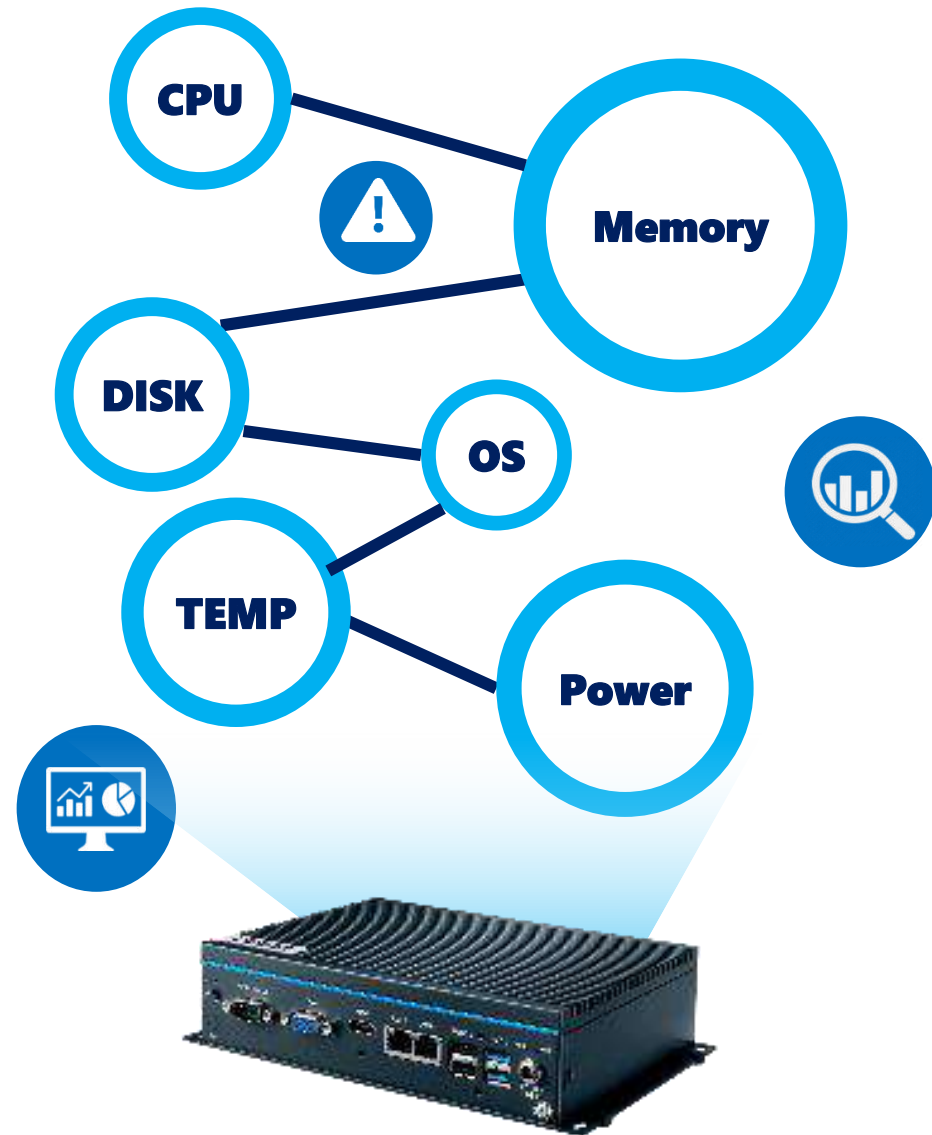
- Networking Connection Configuration
- Cloud Protocol Configuration

EDGE X FOUNDRY™



ADVANTECH

Real-time Hardware Monitoring



Edge Hardware Monitoring

- ✓ Hardware Status Monitoring
- ✓ Disk Life Cycle Monitoring
- ✓ Connected Device Monitoring

Remote Manage to Edge Software Application

- **Running Process Management**

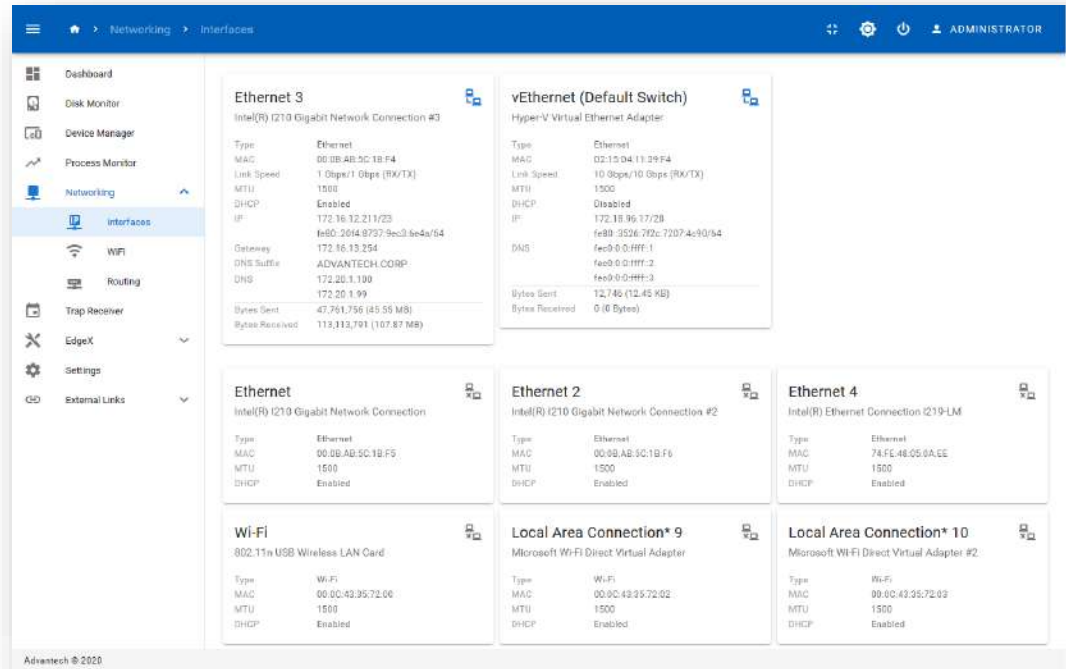
- CPU & Memory Occupied
- Status Monitoring
- Shutdown

The screenshot shows the 'Process Monitor' window of the Advantech software. The interface has a blue header with a search bar and user information (ADMINISTRATOR). A left sidebar contains a menu with options: Dashboard, Disk Monitor, Device Manager, Process Monitor (selected), Networking, Trap Receiver, EdgeX, Settings, and External Links. The main area displays a table of running processes with columns for Name, PID, PPID, Threads, Memory, CPU (%), User Name, Elapsed Time, and Actions. The table lists various system and user processes, with 'cars.exe' highlighted in grey.

Name	PID	PPID	Threads	Memory	CPU (%)	User Name	Elapsed Time	Actions
System	4		160	20 KB	54		2h 49m 38s.	
Secure System	56	4		22728 KB	0	NT AUTHORITY\SYSTEM	2h 49m 41s.	
Registry	100	4	4	184 KB	0	NT AUTHORITY\SYSTEM	2h 49m 40s.	
smss.exe	396	4	2	112 KB	0	NT AUTHORITY\SYSTEM	2h 49m 38s.	
csrss.exe	576	548	12	620 KB	0	NT AUTHORITY\SYSTEM	2h 49m 36s.	
wininit.exe	660	548	1	428 KB	0	NT AUTHORITY\SYSTEM	2h 49m 36s.	
cars.exe	668	652	12	704 KB	0	NT AUTHORITY\SYSTEM	2h 49m 36s.	
services.exe	760	660	8	3056 KB	0	NT AUTHORITY\SYSTEM	2h 49m 35s.	
Lsals.exe	788	660	1	220 KB	0	NT AUTHORITY\SYSTEM	2h 49m 35s.	
lsass.exe	796	660	7	3140 KB	0	NT AUTHORITY\SYSTEM	2h 49m 35s.	
winlogon.exe	832	652	5	700 KB	0	NT AUTHORITY\SYSTEM	2h 49m 35s.	
svchost.exe	984	760	1	220 KB	0	NT AUTHORITY\SYSTEM	2h 49m 35s.	
svchost.exe	1008	760	12	5088 KB	0	NT AUTHORITY\SYSTEM	2h 49m 35s.	
fontdrvhost.exe	1020	832	5	7052 KB	0	Font Driver Host\UMFD-1	2h 49m 35s.	

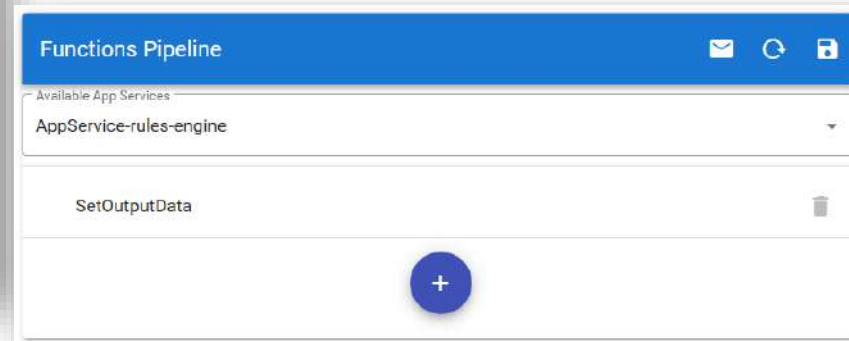
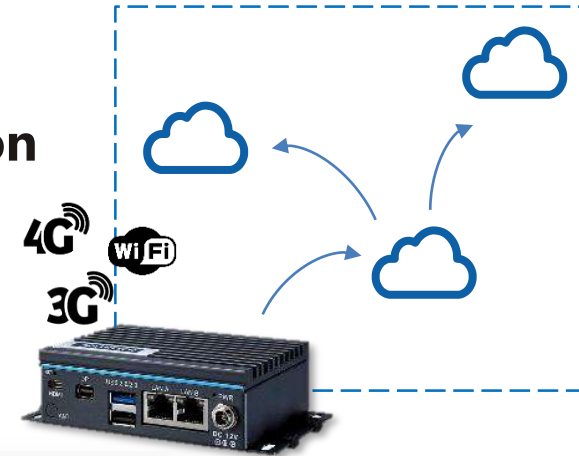
Advantech © 2020

Network & Communication Configuration



- **Communication Configuration**
 - DeviceOn/BI-DM Connection
 - Downlink Protocol Configuration
 - Uplink Protocol Configuration

- **Network Configuration**
 - Interface Status
 - Wifi Manager
 - Routing Settings



Device Name	Operation Status	Admin Status	
^ Service: device-snmp-go			
SNMP	●		
^ Service: edgex-device-modbus			
Modbus	●		

Device Management and Business Integration Platform



PREMPTIVE
RESPONSE



OPERATIONS
SAFETY



MAINTENANCE
EFFICIENCY

Your Digital O&M Ecosystem Accelerator

DeviceOn/BI

WISE-PaaS/IoTSuite



Device & Connectivity
Management



Energy & Environment Domain
Dashboard & Report



Patrol
Inspection



AI Driven
Services

WebAccess/SCADA

WISE-EdgeLink



Pump



Sluice Gate



Generator



PLC



Machine



Compressor

DeviceOn/BI Device Management Portal

Simple and smart device management

Device list view for all functions with intuitive user interface allowing customers to manage device operations in clicks over a browser anywhere.

With the aid of advanced features and business integration functions, DeviceON/BI can help to accelerate your domain application command center setup within minutes.



Device connection setup and configuration



Real time trends and monitoring



Device event history



Firmware OTA management and updates



Platform software installation management

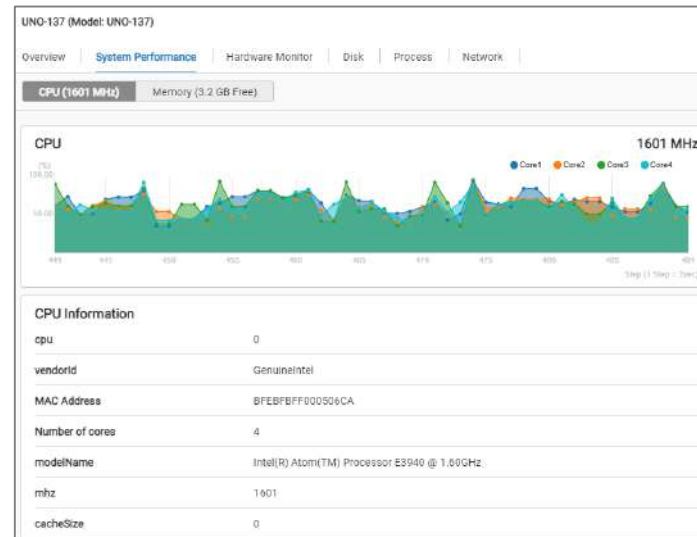
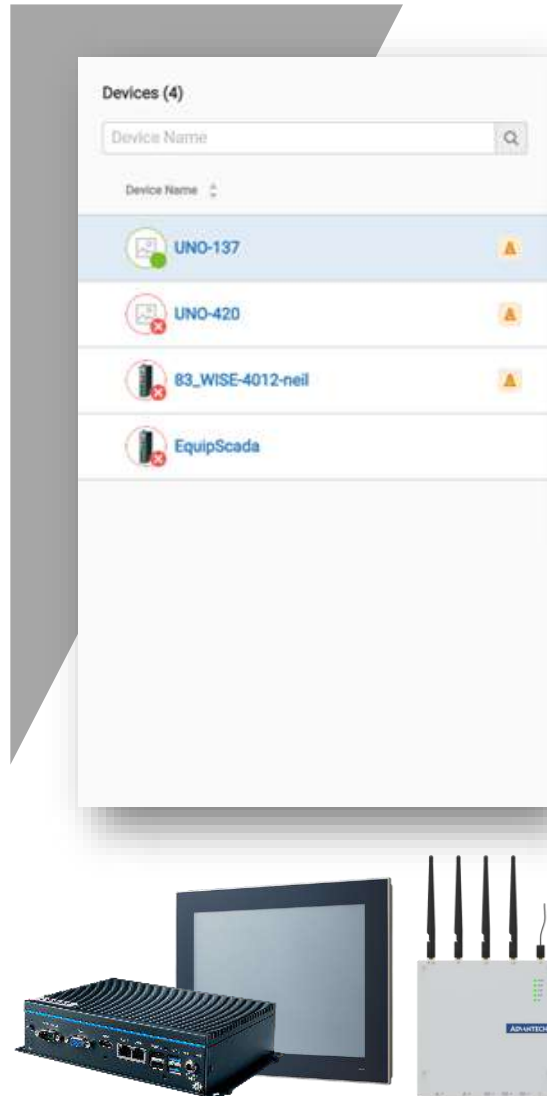


Remote configuration setup management

Cross Platform Achieves Business Integration

Standardize Platform Physical Parameter

We transfer physical parameters like CPU performance, temperature, and input voltage in hardware as a digital tag point in DeviceOn/BI, which allows the user to compare the same physical parameters across different platforms.



DeviceOn/BI DM



DeviceOn/BI

Reduce Migration Costs with Remote Deployment

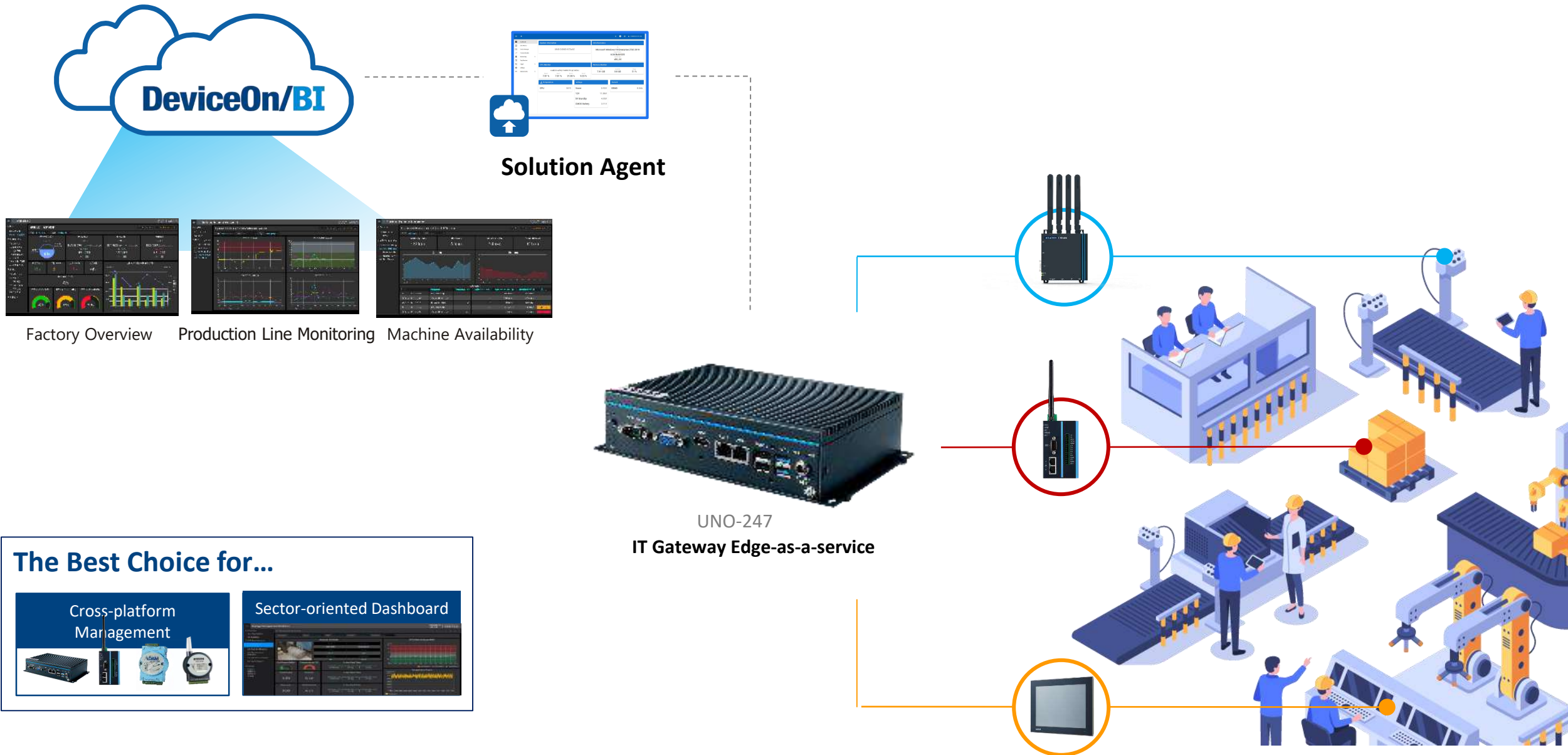


DeviceOn/BI DM

Twin Object-Oriented Factory Visualization



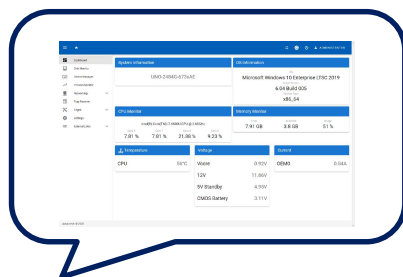
Digital Factory Cross Platform Vertical Integration



All-in-one Edge Intelligence Upgrade



Download & install
upgrade package from
the product page



AI Compliance Hardware



Packaging




User Manual

UNO-247
Edge Gateway



Adaptor

QR Code



Mac: 3030303030
Type Name: UNO-247

▲ Scan QR code
To register your product on
DeviceOn/BI step by step

Platform Portal and Engineering Agent for DeviceOn/BI

- Container-based web page to aggregates all information of hardware platform
- DeviceOn/BI Support
- Container based and EdgeX open framework included for developer

<https://bi.wise-deviceon.advantech.com/edge-as-a-service/Download>

Register and start to use DeviceOn/BI for device management
<https://bi.wise-deviceon.advantech.com/>

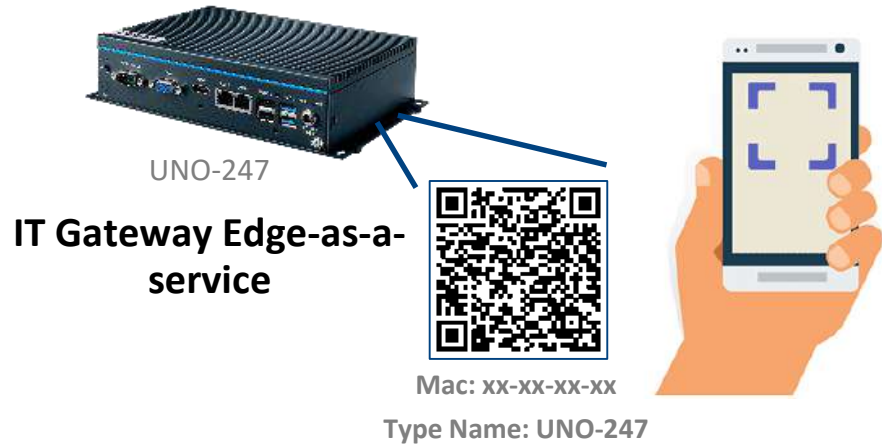
Buy a license in order to use even more DeviceOn/BI features
<https://wise-paas.advantech.com/zh-tw/marketplace/product/advantech.deviceon-bi>

ADVANTECH
Enabling an Intelligent Planet

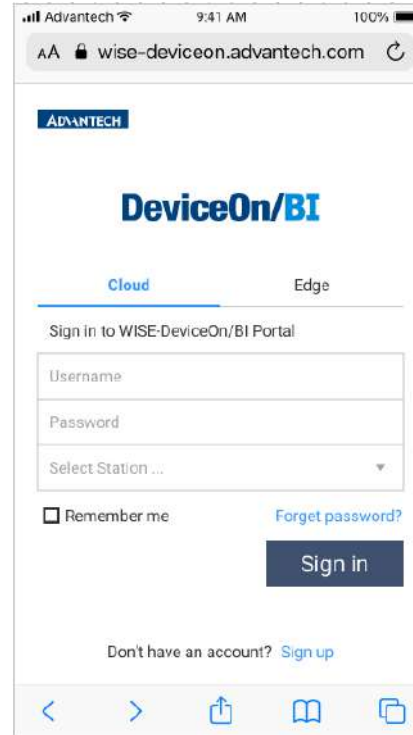
Explore More DeviceOn/BI DM and Edge-as-a-service, please visit
<https://bi.wise-deviceon.advantech.com/edge-as-a-service>

EaaS Installer
Download link

Register DeviceOn/BI by Mobile

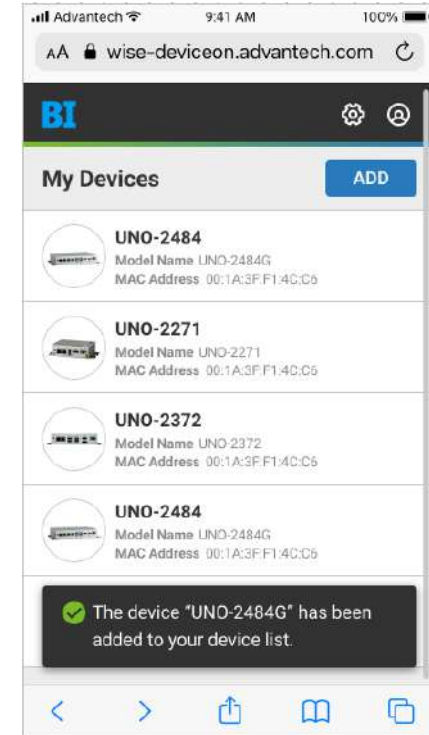
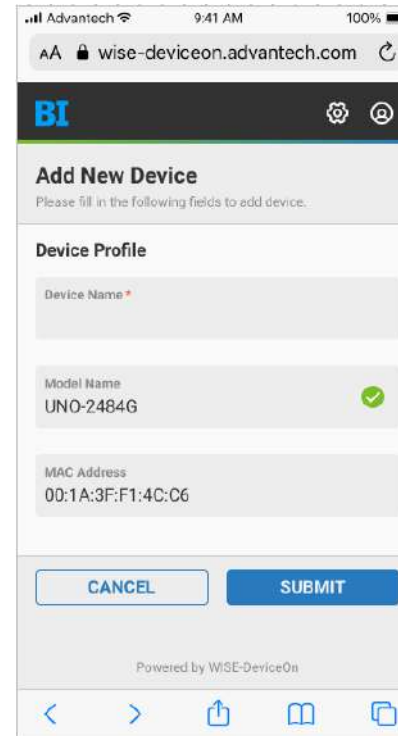


- ✓ **SSO Authentication**
- ✓ **100% Mobile Compatible**
- ✓ **Device Info. Debug**



1 Login DeviceOn/BI

2 Fill in device Info

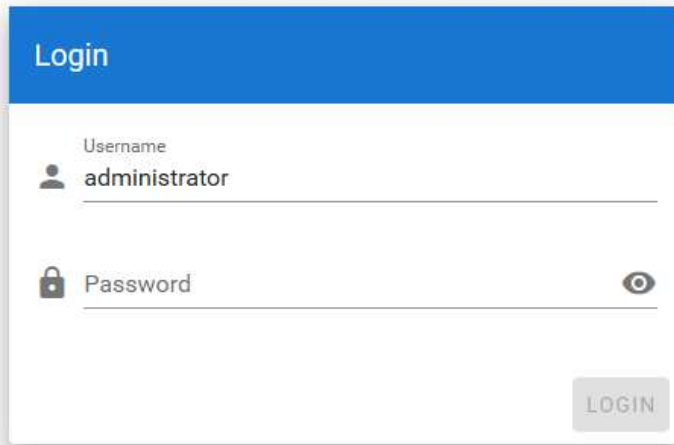


3 Finished

Congratulations!

EIS Portal Zero-Touch Quick Start

<https://localhost:17443/>
(Any Web Browser Compatible)



Windows 10 LTSC

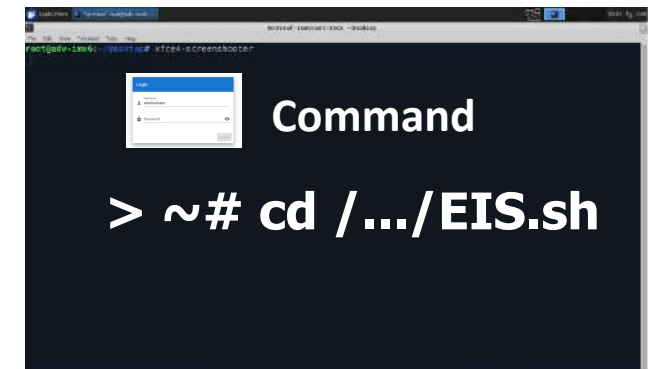


EI Compliance Hardware

Ubuntu 18.04 (Desktop)



Ubuntu 18.04 (Non-desktop)



Default

Windows Administrator Account

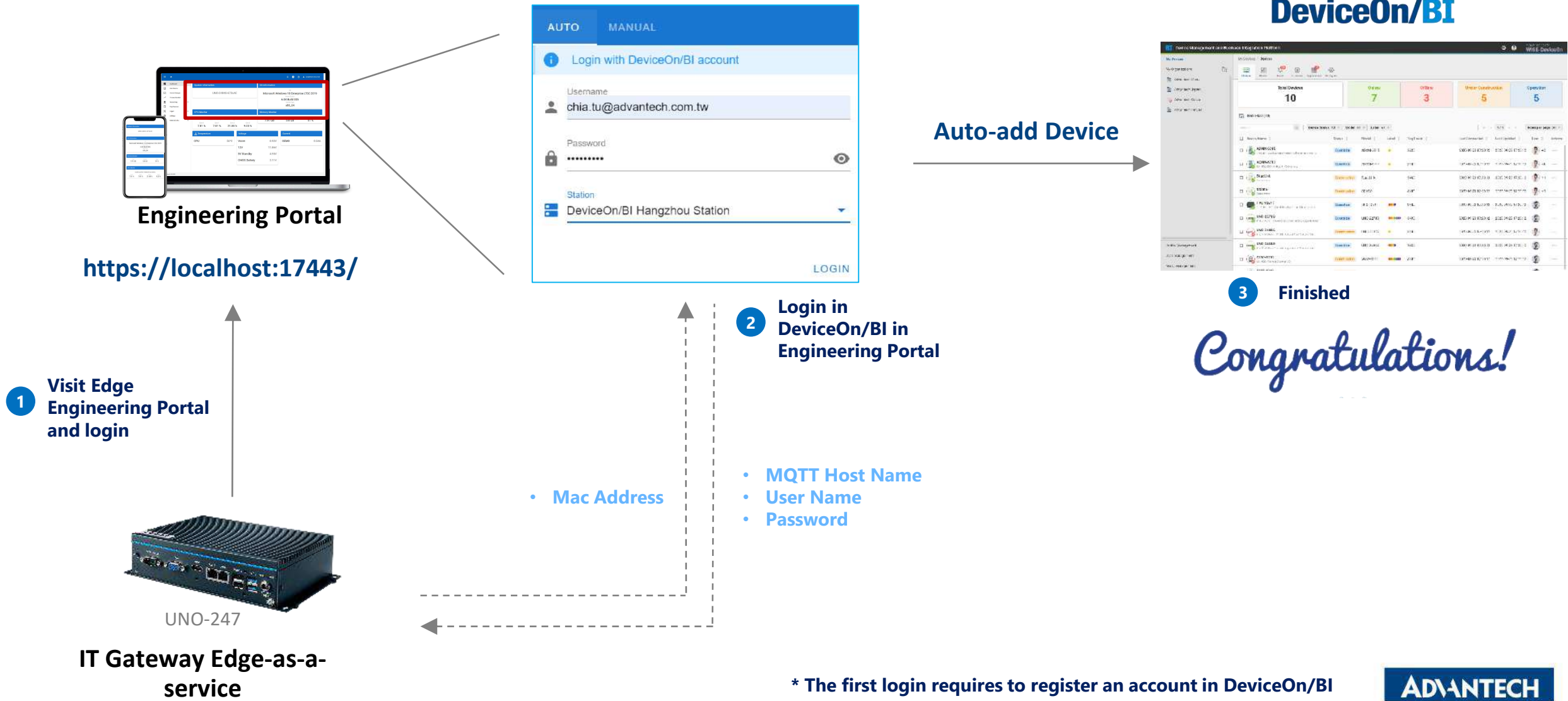


Default

User: advantech
Password: 11111111



DeviceOn/BI Zero-Touch Quick Start



Start Digital Transformation in 24HR

Embedded images and built-in Edge Intelligence agent



**Edge-as-a-service
Gateway**

ESRP-EIS-U238
ESRP-EIS-U137



**Edge-as-service
Panel PC**

ESRP-EIS-TB510

Shop Online

ADVANTECH
IoT Mart



ADVANTECH IoT Mart

全部分類 搜尋產品

產品 產業方案 客服中心 產業快訊 點點有禮 1 item Hi, Chia

首頁 / 終端解決方案 / 邊緣運算應用解決方案

Edge Intelligence

ESRP-EIS-U137
Edge-as-a-service Industrial Edge Gateway

- 用於獨立基於樹莓派物聯網系統的自動化零件
- 工業級輸入/輸出板，搭配RS-232/485和通用型之輸入/輸出(GPIO)，讓您可靈活的擴展
- 備用電池可維持實時時鐘(RTC)於斷電時持續作用
- InAdvRaspbian OS 支援自動主機板識別以及通用型輸入輸出(GPIO)和驅動程式設定
- 4步驟輕鬆安裝與電源4
- 支援用於工業應用的藍牙和 DIN 螺絲安裝
- 可根據需求搭配可信平台模組(TPM)技術，確保硬體的安全

產品規格書 | 技術資源下載

NT\$1,790 (未含稅)

45 件 (現貨)

2 Year Warranty

1 加入購物車 直接結帳

24h

ADVANTECH

Co-Creating the Future of the IoT World

