



# DeviceOn/Display Advantages



## Challenges

1

High maintenance costs and low efficiency

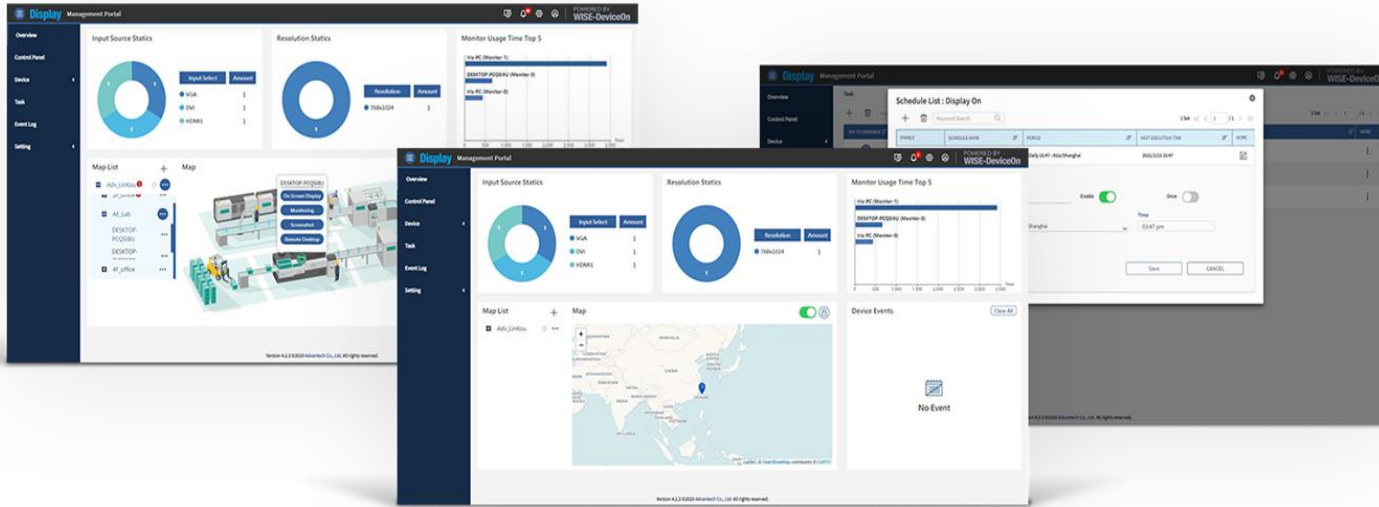
2

Poor production traceability in large factories with numerous displays

3

24/7 operation necessitates real-time machine control

# DeviceOn/Display



**Manage and maintain globally distributed factory displays with one touch!**

**This software utility delivers remote monitoring, status visualization, and real-time management to individual display devices.**



## On Screen Display Control

- Brightness adjustment
- Color temperature



## Touch Function Settings

- Touch function enable/disable
- Remote touch calibration
- Remote touch debug



## Remote Monitoring

- Backlight lifetime monitoring



## Remote Task Management

- Grouping settings
- Power-on timer settings



# DeviceOn/Display



Retail Kiosk



Signage



Medical



Self-service



Gaming



Automation

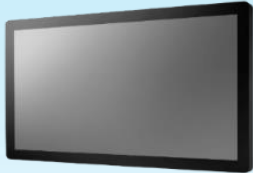
**Advantech  
Edge  
Servers**



### Auto setting

- ✓ Device grouping management
- ✓ Real time monitoring and detection

**Devices**

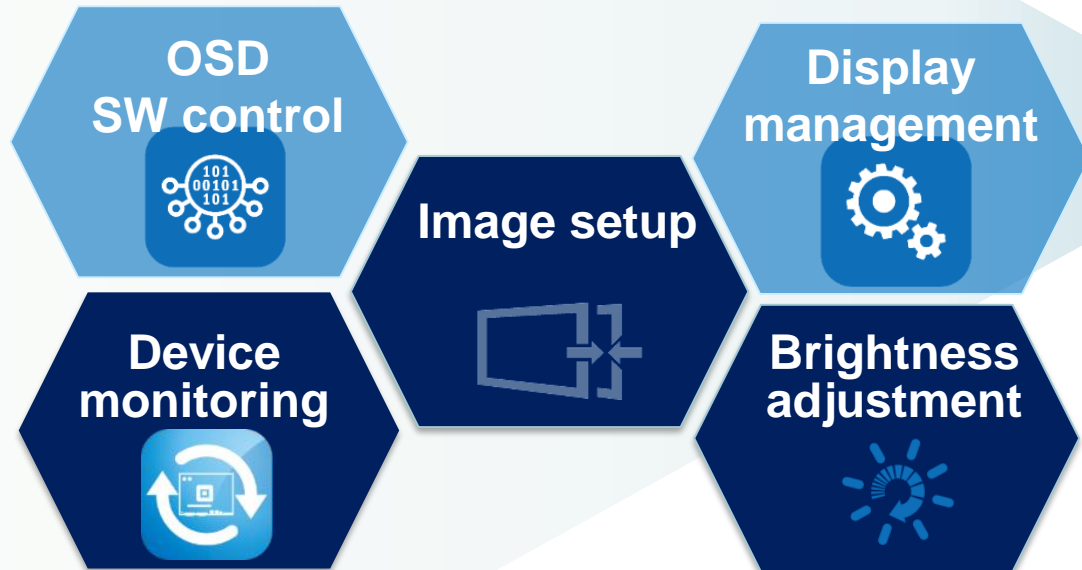


### Real-time Remote Display Control

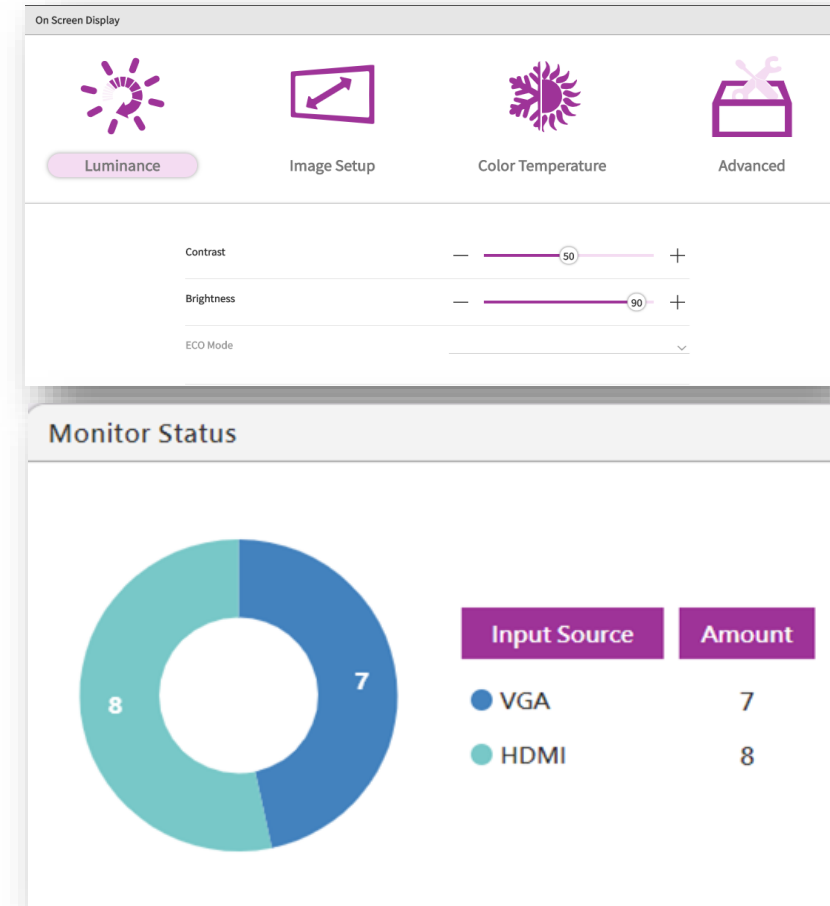
- ✓ Brightness adjustment
- ✓ Color temperature settings
- ✓ On/Off timer switch settings
- ✓ Auto power on settings

# DeviceOn/Display — Real-time Remote Display Control

- ✓ Touchless display solution
- ✓ Effective display adjustment
- ✓ Device monitoring and group control
- ✓ Auto power-on settings

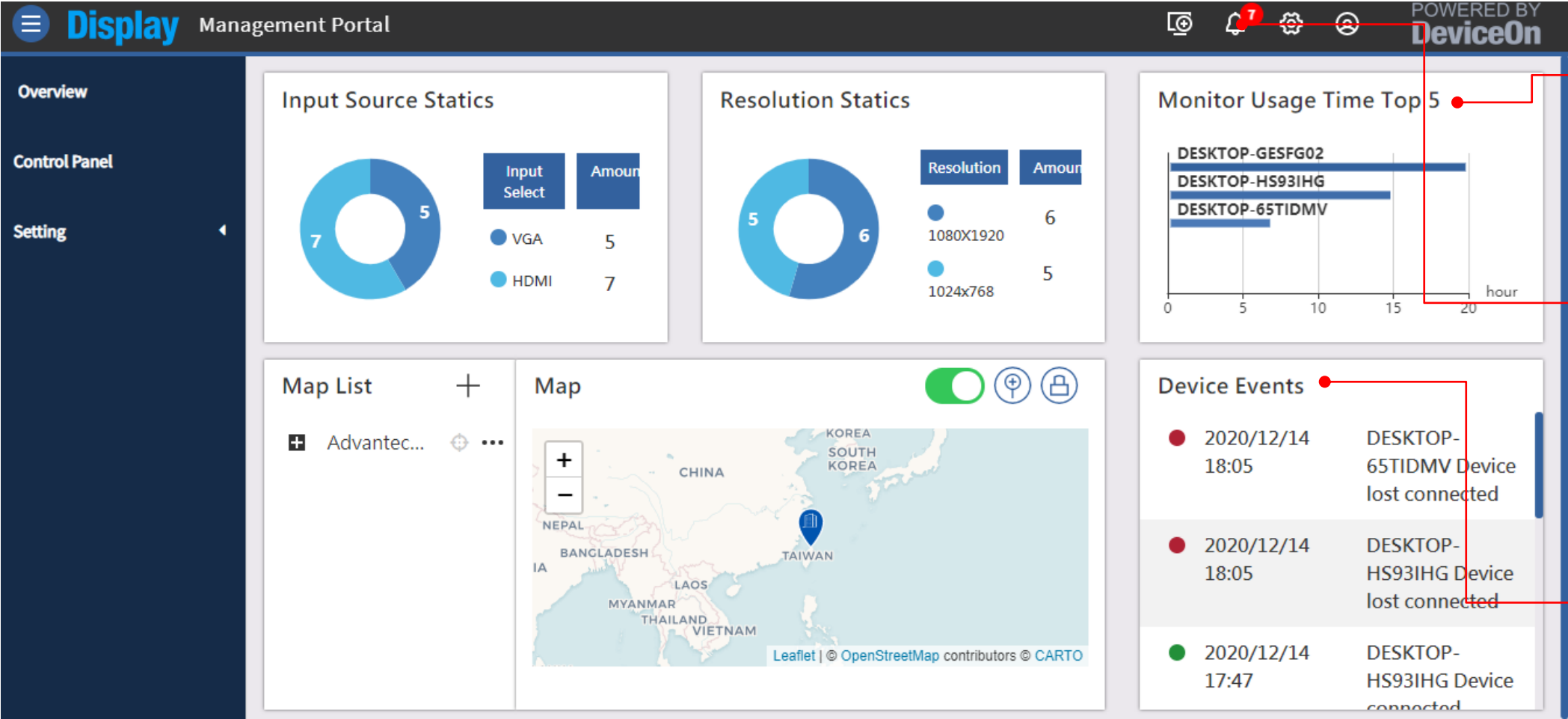


## DeviceOn/Display



Technician uses mobile device to control display OSD

# DeviceOn/Display — Remote Management

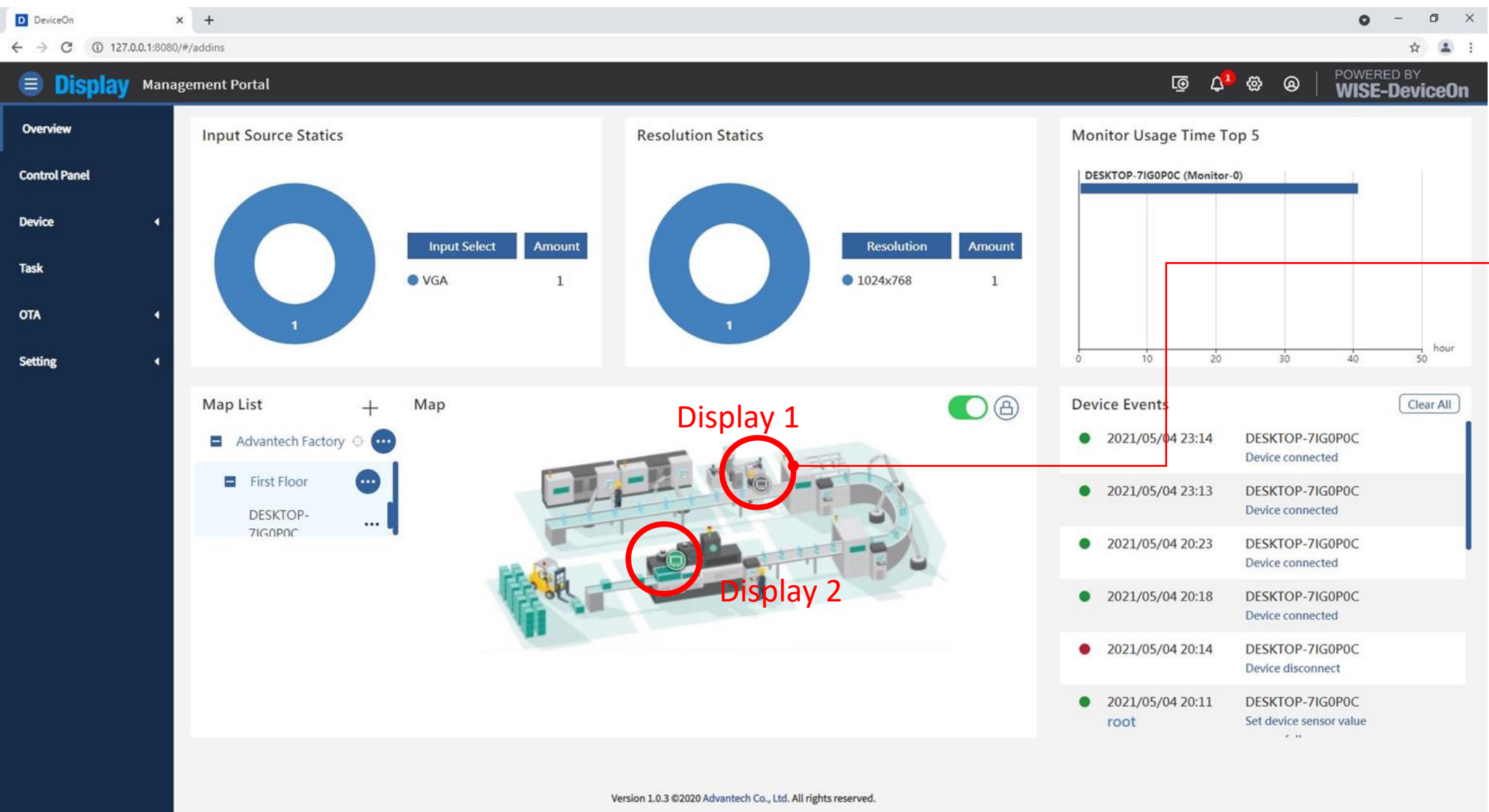


Backlight lifetime monitoring

Warnings and notifications

Device status history: Backlight lifetime setting reminds users of re-calibration

# DeviceOn/Display — Map Management



Manage displays using maps



# DeviceOn/Display

An isometric illustration of a smart factory environment. In the center, a red and white delivery truck is parked. To its left, a conveyor belt system with orange robotic arms is shown. Several workers in blue uniforms and yellow hard hats are positioned around the factory floor. On the left, there are computer workstations with multiple monitors. In the foreground, a worker is operating a control panel. A yellow forklift is visible on the right side. Numerous blue Wi-Fi symbols are scattered throughout the scene, connected by yellow dashed lines to a central point above the truck, representing a networked IoT system. The background features large white storage containers or silos.

Remote task management :  
grouping control

Map management: find  
faulty displays with ease

Remote adjustment and  
troubleshooting



# Why choose **DeviceOn/Display** ?

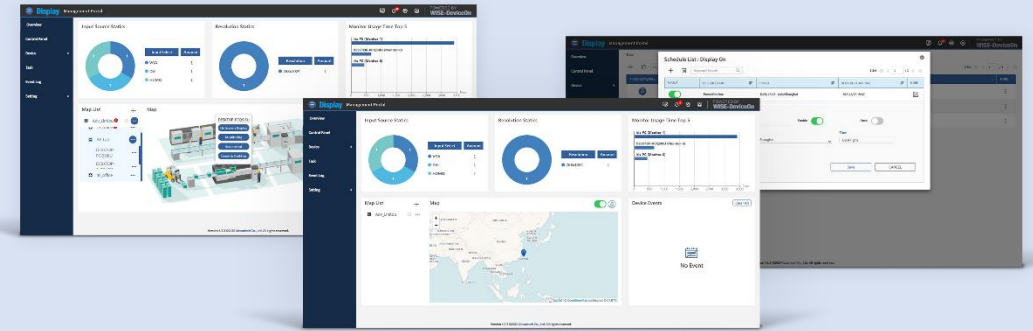
BEFORE  
High costs  
Low efficiency  
Poor traceability

Change to  
factory suit

Dismantle machinery over a  
period of days, and perform  
diagnostics

Find faulty equipment to solve  
phantom touch, touch position shift  
and non-responsive touch issues

With **DeviceOn/Display**



Cutting-edge remote display management software boosts display performance, enables customization, and reduces workplace hazards.

Fix displays remotely in only **3** steps

1. Install touch utility and recalibration
2. Get log file for analysis
3. Customized touch firmware and deployment

# Try This Quick Trial Experience

<https://deviceon-ids.edgecenter.io/?username=root@advantech.com.tw&password=Tv1BY1VYlizUC5Ae3smP9g==&route=addins>

## DeviceOn/Display

IoT Device Operations and Asset Management.

Welcome back!

Login to access the DeviceOn.

Email

root@advantech.com.tw

Password

.....

☒ Remember me

[Forgot password ?](#)

☐ Stay signed in

[Sign Up](#)

☐ Login with LDAP account

Login



DeviceOn  
Display

[Datasheet Download](#)

[Download from Azure Marketplace](#)

Contact us for a **1-month free trial!**  
Try remotely monitoring your industrial displays!



**DeviceOn/Display**

