

RAID Controller

2017/H2 Roadmap

PAPS Product Management
Amber Lu

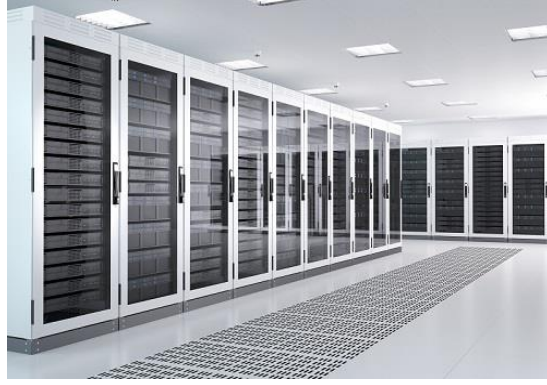
Market Trend in RAID Caontroller

- 40nm CPU Process Technology
- Support Data transfer rate of up to 12Gb/s per port for maximizing performance of SSD
- Lower power consumption for performance and robustness
- Embedded DDR4 memory size up to 8GB
- Cost-effective Cache protection with nearly zero maintenance



RAID Controller Application

Data Center
Cloud Computing



We provide trusted Broadcom MegaRAID series and Adaptec 8 series to meet growing demand in data center infrastructure, cloud computing, and other applications for critical data protection. They feature 12Gbps SAS ports and maximum performance for up to 16 SSDs, maximum reliability with RAID levels 0, 1, 1E, 5, 6, 10, 50 and 60, and maintenance free cache protection.

Server platform
Storage System



Broadcom MegaRAID Entry series and Adaptec Entry series are designed for storage PC and entry-level servers. They support 12Gbps and 6 Gbps compatibility with 4 or 8 HDD or SSD SAS/SATA devices at an affordable price point.

General Industrial
applications



In the Industrial 4.0 era, for general industrial PC for bandwidth-intensive applications, we offer cost-effective Broadcom 9311-8i. It features 12Gb/s SAS data transfer rates and integrated RAID levels (0,1,1E, and 10) to support increased connectivity and maximum performance.

RAID Card Roadmap

Available ■ Planning

RAID

Adaptec 8405



- 12Gb/s SAS 3.0 Compliant
- 4 Port, internal
- RAID 0,1,1E,5,6,10,50,60
- PCIe8 Gen3

Adaptec 8885/8885Q



- 12Gb/s SAS 3.0 Compliant
- 8 internal, 8 external
- RAID 0,1,1E,5,6,10,50,60
- PCIe8 Gen3
- Cache Protection(8885Q)

Broadcom 9380-4i4e



- 12Gb/s SAS 3.0 Compliant
- 4 internal, 4 external
- RAID 0,1,5, 6,10,50,60
- PCIe8 Gen3

Broadcom 9271-4i/8i



- 6Gb/s SAS 3.0 Compliant
- 4 Port / 8Port, internal
- RAID 0, 1, 5, 6, 10, 50 60
- PCIe8 Gen3

Broadcom 9361-8i



- 12Gb/s SAS 3.0 Compliant
- 8Port, internal
- RAID 0, 1, 5, 6, 10, 50 60
- PCIe8 Gen3

Adaptec 8805



- 12Gb/s SAS 3.0 Compliant
- 8 Port, internal
- RAID 0,1,1E,5,6,10,50,60
- PCIe8 Gen3

Adaptec 8405E



- 12Gb/s SAS 3.0 Compliant
- 4 Port, internal
- RAID 0, 1, 10
- PCIe8 Gen3

Entry-RAID

Adaptec 6405E



- 6Gb/s SAS 3.0 Compliant
- 4 Port, internal
- RAID 0, 1, 1E, 10, JBOD
- PCIe1 Gen2

Broadcom 9341-8i



- 12Gb/s SAS 3.0 Compliant
- 8Port, internal
- RAID 0, 1, 5, 10, 50, JBOD
- PCIe8 Gen3

HBA

Broadcom 9311-8i



- 12Gb/s SAS 3.0 Compliant
- 8 Port, internal
- RAID 0, 1, 1E, 10
- PCIe8 Gen3

M/P

2017/H2

Focus Products – Entry

Part Number	96RC-SAS-4P-PE-AD1	96RC-SAS-8P-PE-LS5
Manufacturer	ADAPTEC	LSI
Description	6405E	9341-8i
Spec Detail		
Adapter Interface	PCI-E x 1	PCI-E x 8
Controller Type	Hardware RAID	Hardware RAID
Hard Drive Interface	SAS / SATA	SAS / SATA
On-Board Memory	128 MB	1 GB
RAID Level	0, 1, 1E, 10, JBOD	0, 1, 5, 10, 50, JBOD
Ports	4	8
Data Transfer Rate	6 Gb/s	12 Gb/s
Backup Battery Option	N/A	N/A

Focus Products – 4 Channels

Part Number	96RC-SAS-4P-PE-LS3	96RC-SAS-4P-PE-AD3
Manufacturer	LSI	ADAPTEC
Description	9271-4i	8405
Spec Detail		
Adapter Interface	PCI-E x 8	PCI-E x 8
Controller Type	Hardware RAID	Hardware RAID
Hard Drive Interface	SAS / SATA	SAS / SATA
On-Board Memory	1 GB	1 GB
RAID Level	0, 1, 5, 6, 10, 50, 60	0, 1, 1E, 5, 6, 10, 50, 60
Ports	4	4
Data Transfer Rate	6 Gb/s	12 Gb/s
Backup Battery Option	96RC-IBBU09-LS	N/A

Focus Products – 8 Channels

Part Number	96RC-SAS-8P-PE-LS4	96RC-SAS-8P-PE-LS3	96RC-SAS-8P-PE-AD4
Manufacturer	LSI	LSI	ADAPTEC
Description	9361-8i	9271-8i	8805
Spec Detail			
Adapter Interface	PCI-E x 8	PCI-E x 8	PCI-E x 8
Controller Type	Hardware RAID	Hardware RAID	Hardware RAID
Hard Drive Interface	SAS / SATA	SAS / SATA	SAS / SATA
On-Board Memory	1 GB	1 GB	1 GB
RAID Level	0, 1, 5, 6, 10, 50, 60	0, 1, 5, 6, 10, 50, 60	0, 1, 1E, 5, 6, 10, 50, 60
Ports	8	8	8
Data Transfer Rate	12 Gb/s	6 Gb/s	12 Gb/s
Backup Battery Option	N/A	96RC-IBBU09-LS	N/A

Thank You



Enabling an Intelligent Planet

ADVANTECH