

WISE-Edge365

A No-Code SaaS Platform for Device and Data Management to Accelerate Digital Transformation

- ✓ What is WISE-Edge365
- ✓ An overview of WISE-Edge365 functions
- ✓ Advantech hardware with WISE-Edge365
- ✓ Vertical focus and applications



ADVANTECH

Enabling an Intelligent Planet

www.advantech.com

Pain Points in IoT Environments

Complex Integration with Mass Deployment

- Edge devices are usually deployed in the same network. However, the complexity of edge devices and protocols increases the difficulty of data integration.
- Large amounts of time and manpower are required for programming to ensure that devices communicate with each other.



Difficulty of Maintaining Uptime

- Computing systems in their fields of operation are usually located at unstaffed or remote sites. It is difficult and costly to maintain system uptime and prevent equipment breakdown.



Start Managing Your Devices and Data with WISE-Edge365

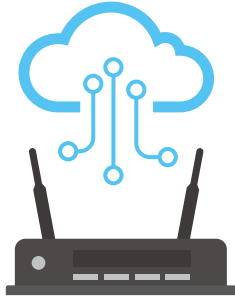
WISE-Edge365 offers you a complete device management service, together with edge software and a cloud service, to connect to Advantech IoT devices, and remotely manage those devices along with their data and applications.

As a SaaS hosted on Microsoft Azure, WISE-Edge365 provides a user-friendly interface on the portal. Users can log in to access every function such as device configuration, real-time monitoring, and user management. In addition, it is simple and flexible to visualize data and export third-party systems.

Your Benefits at a Glance

- ✓ A single management platform reduces the hassle of system integration
- ✓ Remote access to systems which minimizes downtime
- ✓ Increased operation efficiency with IoT connectivity and OTA functions
- ✓ One-stop shopping for everything you need at the edge
- ✓ SaaS-based device management, pay-as-you-go

An Overview of WISE-Edge365 Functions



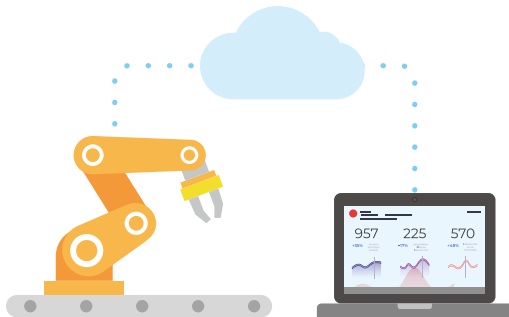
Everything You Need for IoT Edge

Advantech offers IPC, protocol gateways, intelligent I/O, wireless gateways, etc. It's a one-stop shop for everything you need for AIoT projects.



Analyze Your Data with Dashboards

WISE-Edge365 comes with cloud dashboards for you to build big data analytic applications in a no-code environment.



A Single Platform for Device Management

WISE-Edge365 provides a single platform for you to manage all your edge devices to reduce the complication of using multiple management platforms from different vendors.



Maintenance Resource Optimization

Users can set maintenance alarms with big data dashboards. Dispatch lists can also be sent out to maintenance engineers to efficiently utilize their work force.

Seamless Integration from Edge to Cloud

Cloud Service with Three Pillars

WISE-Edge365 provides cloud service with following functions to remotely manage Advantech IoT devices and platforms.

Connectivity Management

- Instant onboarding
- Batch provisioning
- Authentication

Device & Platform Management

- Event notification
- Scheduling
- Remote management

Data Management

- Analytics
- Data storage
- Rule engine

Powerful Edge Solution

WISE-Edge365 provides intelligent edge software such as EdgeLink and DeviceOn bundled with Advantech devices, to easily collect, process, and integrate data.



Advantech Hardware with WISE-Edge365 Cloud Service

WISE-Edge365 Cloud Service is a low-code/no-code development platform allowing users to fully manage all Advantech hardware such as computing platforms, edge gateways and I/O without any development cycles required.

Supported Advantech Hardware	Cloud Functions	Content
Computing platforms	Computing platform management	<ul style="list-style-type: none"> Remote monitoring and control of platforms USB/keyboard lockdown management
	Application software management	Setup software and application updates on the platforms from the cloud
	Data management	Data export via MQTT or API to third-party cloud services or customer systems
	Customer edge device management	Download Edgeline to computing platforms for field data collection
Edge gateway & I/O	Device management	Remote access to devices for configuration and updates
	Connectivity management	Monitor and manage network connections for IoT deployment
	Data management	Data export via MQTT or API to third-party cloud services or customer systems



Vertical Focus and Applications

Smart Factories



Remote Equipment Management & Maintenance

Equipment such as boilers and compressors play key roles in the operation of a factory. WISE-Edge365 helps customers connect the equipment and data via Advantech IoT devices, and transmits the data to the cloud. WISE-Edge365 also supports OTA updates which can help machine builders remotely catch issues and update software on devices that are difficult to access.

Building

Remote HVAC Monitoring & Maintenance

HVAC monitoring is important as it is a major contributor to the maintenance and energy consumption expenses of a building. WISE-Edge365 offers a reliable solution for remote operation and maintenance of IoT devices connected to HVAC to track energy consumption and the performance of heating, ventilation, and air conditioning units.



Energy & Environment



Distributed Remote Monitoring

WISE-Edge365 provides a cloud-enabled facility and environmental monitoring for water management systems. Advantech IoT devices bundled with edge software can track the real-time operating status of distributed pumps and remotely control the water supply.

Regional Service & Customization Centers

China	Kunshan 86-512-5777-5666	Taiwan	Taipei 886-2-7732-3399	Netherlands	Eindhoven 31-40-267-7000	Poland	Warsaw 00800-2426-8080	USA	Milpitas, CA 1-408-519-3898
--------------	-----------------------------	---------------	---------------------------	--------------------	-----------------------------	---------------	---------------------------	------------	--------------------------------

Worldwide Offices

Asia Pacific	Asia Pacific	Europe	Americas
Taiwan	Japan	Netherlands	North America
Toll Free 0800-777-111	Toll Free 0800-500-1055	Eindhoven 31-40-267-7000	Toll Free 1-888-576-9668
Taipei & IoT Campus 886-2-2792-7818	Tokyo 81-3-6802-1021	Breda 31-76-523-3100	Cincinnati 1-513-742-8895
Taichung 886-4-2372-5058	Osaka 81-6-6267-1887		Milpitas 1-408-519-3898
Kaohsiung 886-7-392-3600	Nagoya 81-0800-500-1055		Irvine 1-949-420-2500
	Nogata 81-949-22-2890	Germany	Ottawa 1-815-433-5100
China	Korea	Toll Free 00800-2426-8080/81	Chicago 1-888-576-9668
Toll Free 800-810-0345	Toll Free 080-363-9494/5	Munich 49-89-12599-0	Boston 1-800-866-6008
Beijing 86-10-6298-4346	Seoul 82-2-3660-9255	Düsseldorf 49-2103-97-855-0	
Shanghai 86-21-3632-1616		France	Brazil
Shenzhen 86-755-8212-4222	Singapore	Paris 33-1-4119-4666	Toll Free 0800-770-5355
Chengdu 86-28-8545-0198	Singapore 65-6442-1000		São Paulo 55-11-5592-5367
Hong Kong 852-2720-5118		Italy	
	Malaysia	Milan 39-02-9544-961	Mexico
	Kuala Lumpur 60-3-7725-4188		Toll Free 1-800-467-2415
	Penang 60-4-537-9188	UK	Mexico City 52-55-6275-2777
		Newcastle 44-0-191-262-4844	Guadalajara 52-33-3169-7670
	Thailand	London 44-0-870-493-1433	
	Bangkok 66-02-2488306-9	Spain	Middle East and Africa
	Vietnam	Madrid 34-91-668-86-76	Israel 072-2410527
	Hanoi 84-24-3399-1155		Turkey 90-212-222-0422
	Hochiminh 84-28-3836-5856	Sweden	Turkey-Bursa 90-224-413-3134
		Stockholm 46-0-864-60-500	
	Indonesia		
	Jakarta 62-21-751-1939	Poland	
		Warsaw 48-22-31-51-100	
	Australia		
	Toll Free 1300-308-531	Russia	
	Melbourne 61-3-9797-0100	Moscow 8-800-555-01-50	
		St. Petersburg 8-812-332-57-27	
	India	8-921-575-13-59	
	Bangalore 91-94-4839-7300	Czech Republic	
	Pune 91-94-2260-2349	Ústí nad Orlicí 420-465-524-421	
		Ireland	
		Galway 353-91-792444	

www.advantech.com

Please verify specifications before ordering. This guide is intended for reference purposes only.
All product specifications are subject to change without notice.
No part of this publication may be reproduced in any form or by any means, electronic, photocopying, recording or otherwise, without prior written permission of the publisher.
All brand and product names are trademarks or registered trademarks of their respective companies.
© Advantech Co., Ltd. 2022



Enabling an Intelligent Planet